

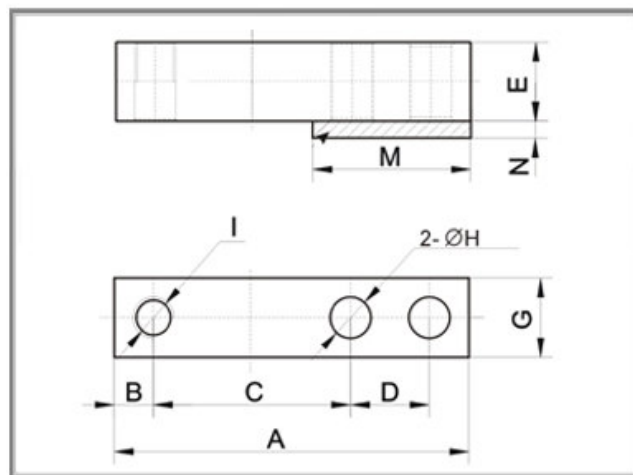
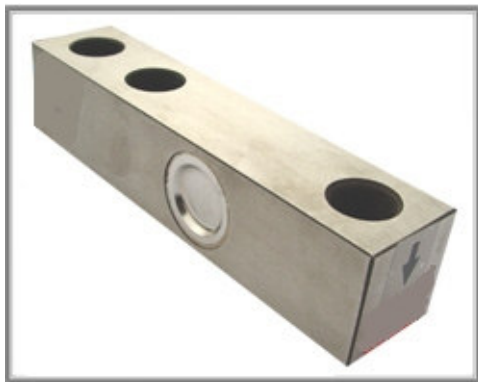
SB SERIES TRANSDUCER

CONSTRUCTION:

- Single ended shear beam load cell
- Nickel plated alloy steel, Stainless steel cup covers
- Protected Class IP67
- **Option:** Stainless Steel construction, IP 68

APPLICATION:

Low profile platforms, tank & hopper weighing, process weighing, pallet scales, on board vehicle weighing, overhead track scales.



Rated Load	Dimensions in 'mm'									
	A	B	C	D	E	G	H	M	N	I
100 kg ~ 2 t	130.0	12.7	76.2	25.4	31.8	31.8	Ø13.5	57.0	4.0	M12x1.75
2.5 ~ 5 t	171.5	19.1	95.3	38.1	38.1	38.1	Ø19.8	76.0	6.0	M20x1.5
7.5 ~ 10 t	222.2	25.4	120.6	50.8	50.8	50.8	Ø26.2	108.0	6.0	M24x2.0

TECHNICAL DATA

Capacities	100, 200, 300, 500 kg 1, 2, 3, 5, 10 t	
Sensitivity	3.0 ± 1% mV/V	
Non-linearity	± 0.02% FS	
Repeatability	± 0.01% FS	
Hysteresis	± 0.02% FS	
Creep (30 Min.)	± 0.02% FS	
Zero Balance	± 1% FS	
Insulation Resistance	> 5000 MΩ (@ 50V DC)	
Resistance	Input	400 ± 16Ω
	Output	350 ± 3Ω
Temperature Range	Compensated	-10 ~ +55°C
	Operating	-30 ~ +80°C
Temperature Effect	Output (Span)	± 0.02% FS/10°C
	Zero	± 0.03% FS/10°C
Maximum Supply Voltage	15V (DC/AC)	
Recommended Supply Voltage	5 ~ 12V (DC/AC)	
Safe Overload	150% FS	
Maximum Overload	200% FS	
Safe Sideload	100% FS	
Protection Class	IP 67	
Cable	Ø6 x 3.50m (Up to 3t)	
	Ø6 x 6.00m (5t, 10t)	

Haris Sensor Technologies Private Limited

223, Shanti Industrial Estate, Sarojini Naidu Road, Mulund (West), Mumbai - 400080, INDIA.
TeleFax: [+91-22] 2567 2147, 2204, 2205 ♦ E-mail: info@haris.in ♦ Website: www.harissensor.com

HARIS