

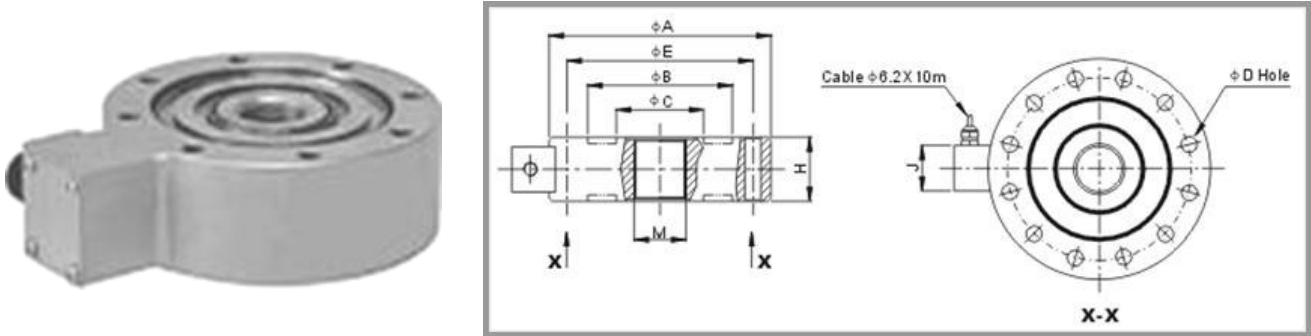
# Model – ULC

## CONSTRUCTION:

- Ultra low profile construction used in tension and compression.
- Shear web design provides excellent performance, designed delicately for high accuracy and high capability of overload.

## APPLICATION:

Especially suitable for applications where height is critical, material testing machines and other tension application.



Rated Load	Dimensions in 'mm'							
	A	B	C	D	E	H	J	M
1 ~ 5 t	113.0	76.0	42.0	8- $\phi$ 7	97.0	35.0	32.0	M24x2
10 ~ 20 t	155.0	101.0	61.0	12- $\phi$ 11	130.0	45.0	32.0	M36x2
30 t	180.0	120.0	80.0	12- $\phi$ 13	150.0	58.0	32.0	M42x2
50 t	205.0	120.0	80.0	16- $\phi$ 13	165.0	64.0	32.0	M42x2
100 t	280.0	176.0	124.0	16- $\phi$ 17	228.0	90.0	48.0	M70x3
150 ~ 200 t	296.0	217.0	139.0	16- $\phi$ 22	256.0	120.0	48.0	M90x3
300 t	346.0	236.0	180.0	16- $\phi$ 26	282.0	180.0	48.0	M120x3

## TECHNICAL DATA:

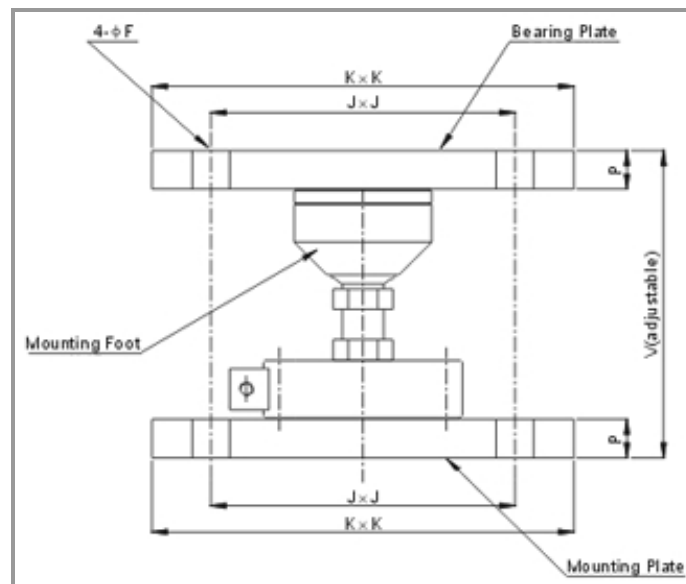
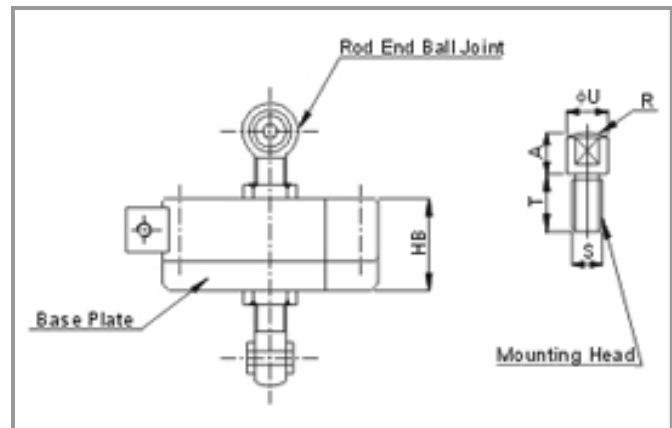
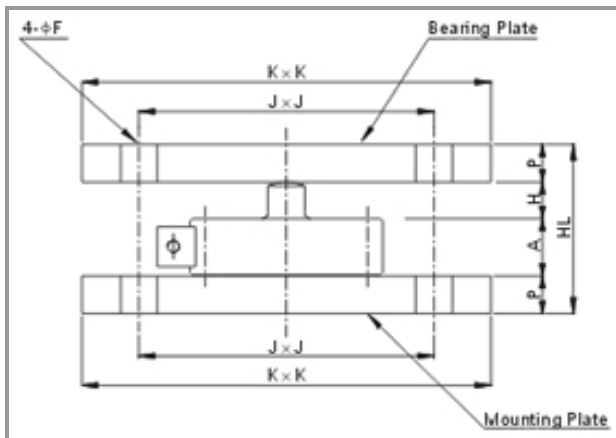
Capacities	1, 2, 3, 5, 10, 20, 30, 50, 100, 200, 300 t	
Sensitivity	2 mV/V $\pm$ 1%	
Non-Linearity	$\pm$ 0.05% FS	
Repeatability	$\pm$ 0.03% FS	
Hysteresis	$\pm$ 0.05% FS	
Creep (20 Min.)	$\pm$ 0.03% FS	
Zero Balance	$\pm$ 1 % FS	
Insulation Resistance	> 2000 M $\Omega$ (@ 50V DC)	
Resistance	Input	700 $\pm$ 30 $\Omega$
	Output	700 $\pm$ 5 $\Omega$
Temperature Range	Compensated	-10 ~ +55 $^{\circ}$ C
	Operating	-30 ~ +70 $^{\circ}$ C
Temperature Effect	Output (Span)	$\pm$ 0.05% FS/10 $^{\circ}$ C
	Zero	$\pm$ 0.05% FS/10 $^{\circ}$ C
Maximum Supply Voltage	40V (DC/AC)	
Recommended Supply Voltage	5 ~ 24V (DC/AC)	
Safe Overload	150% FS	
Maximum Overload	300% FS	
Protection Class	IP 67	
Cable	$\phi$ 6 x 3m	

**Haris Sensor Technologies Private Limited**

Row House No.11, Narayani C.H.S. Ltd., Sector 2, Airoli, Navi Mumbai - 400 708.  
 TeleFax: +91-22-2779 6901 ~ 06 ✉ E-mail: harisent@vsnl.net ✉ Website: harissensor.com

**HARIS**

## Model – ULC (Mounting)



Rated Capacities	Dimensions in 'mm'										
	A	F	HB	HL	J	K	P	R	S	T	U
1 ~ 5 t	8.0	14.0	64.0	89.0	128.0	150.0	23.0	85.0	M24x2	25.0	27.0
10 ~ 20 t	22.0	18.0	90.0	123.0	140.0	200.0	28.0	150.0	M36x2	38.0	45.0
30 t	32.0	18.0	108.0	156.0	170.0	225.0	33.0	180.0	M42x2	48.0	54.0
50 t	42.0	18.0	114.0	182.0	200.0	250.0	38.0	200.0	M42x2	54.0	64.0
100 t	48.0	18.0	--	238.0	290.0	325.0	50.0	300.0	M70x3	79.0	102.0
150 ~ 200 t	60.0	18.0	--	340.0	330.0	365.0	80.0	300.0	M90x3	79.0	136.0
300 t	80.0	18.0	--	460.0	370.0	405.0	100.0	500.0	M120x3	90.0	160.0

**Haris Sensor Technologies Private Limited**

Row House No.11, Narayani C.H.S. Ltd., Sector 2, Airoli, Navi Mumbai - 400 708.  
 TeleFax: +91-22-2779 6901 ~ 06 📧 E-mail: harisent@vsnl.net 🌐 Website: harissensor.com

**HARIS**